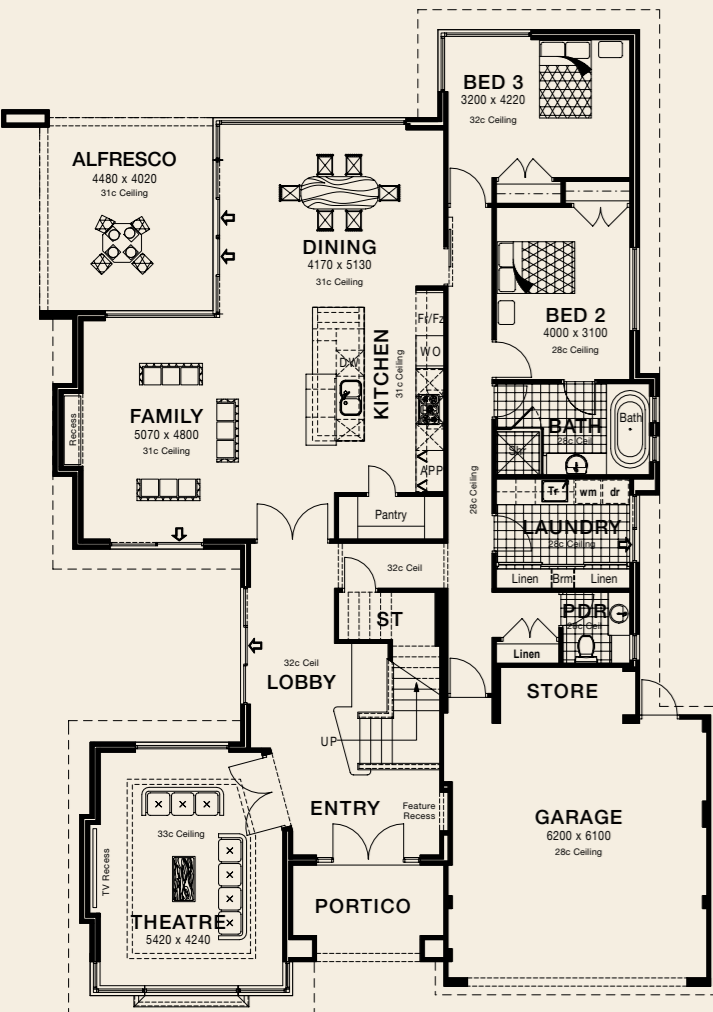
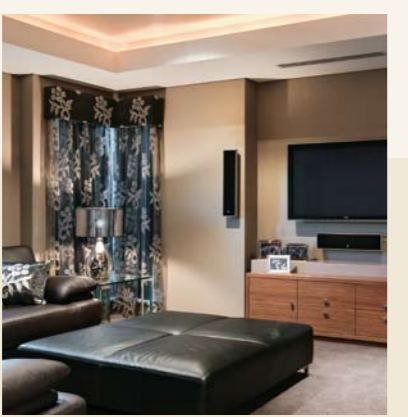
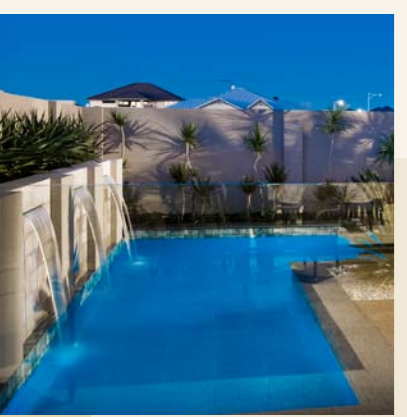
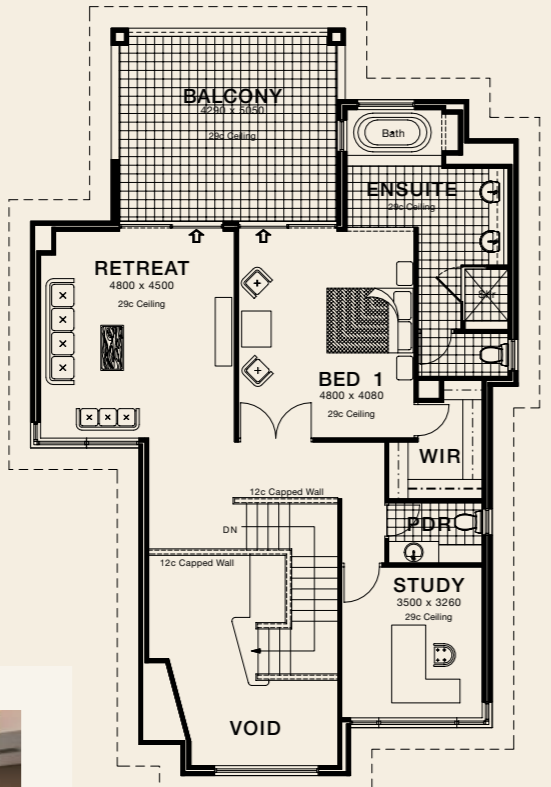


Creative lifestyle solutions



alternate floor plans
rear views



our commitment

We are dedicated to building beautiful homes to satisfy our clients needs with creative solutions, to everyday living.

At Novus Homes we adopt the age old philosophy that personalised customer service and good communication, makes building your dream home a pleasurable experience.

We listen to our clients needs, determine a budget, then set about the task of creating a home to suit the family and their lifestyle requirements.

At Novus Homes we leave you with a memorable experience that testifies to our reputation.

HOW IT MEASURES UP

| | |
|---------------------------|----------------------------|
| Frontage | 16.45m |
| Depth | 22.65m |
| Ground Floor Total | 271.30m ² |
| Areas | |
| Floor | 202.66m ² |
| Garage | 42.67m ² |
| Portico | 7.86m ² |
| Alfresco | 18.11m ² |
| Upper Floor Total | 151.18m ² |
| Areas | |
| Floor | 105.25m ² |
| Stairwell | 22.14m ² |
| Balcony | 23.79m ² |
| GRAND TOTAL | 422.48m² |

32 Mumford Place Balcatta WA 6021 | Telephone: 08 9240 1969 | Facsimile: 08 9240 1970 | Email: sales@novus-homes.com.au | www.novus-homes.com.au

© Novus Homes | All plans and information in this brochure copyright protected by Novus Homes.



BUILD CREATIVELY | STYLE | DESIGN | QUALITY

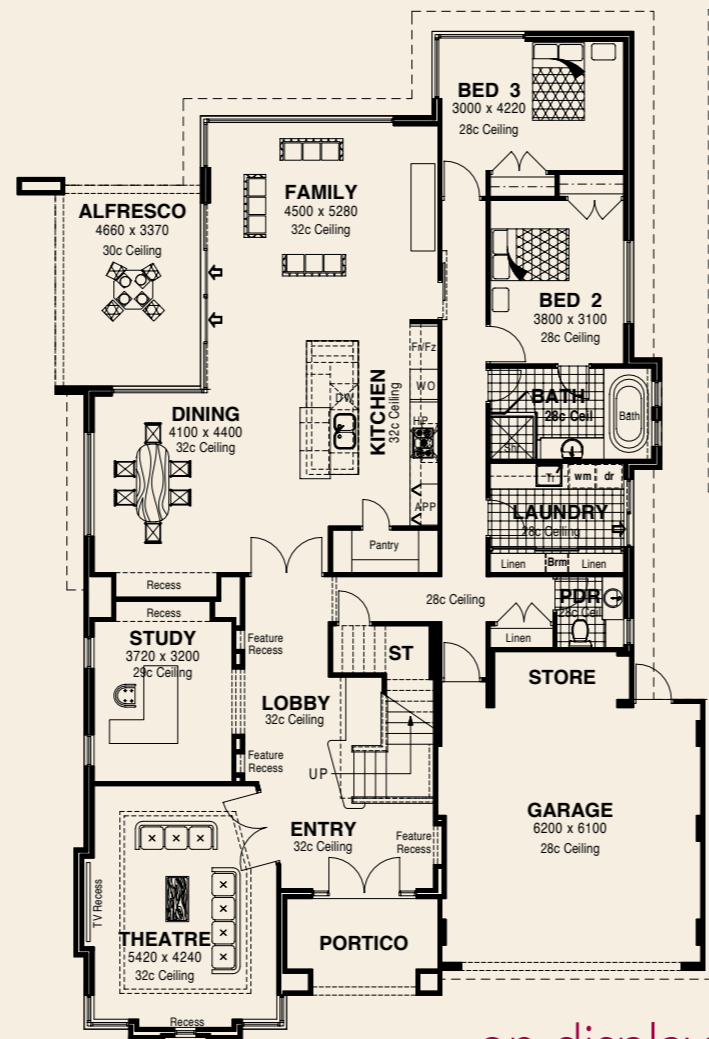




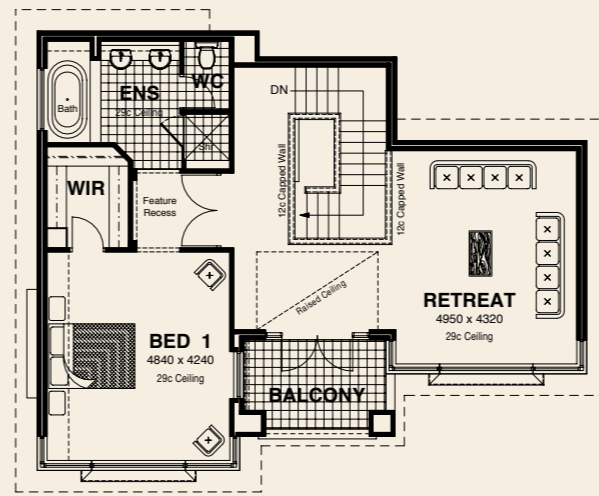
family living

A classic modern two-storey home, The Monterey has been creatively designed to cater for family living and entertaining.

Novus Homes is proud to present The Monterey as a testament to the ultimate in lifestyle living. Our design team set about creating a classic modern two-storey home which has been exceptionally designed to cater for the ultimate in family lifestyle living.



on display

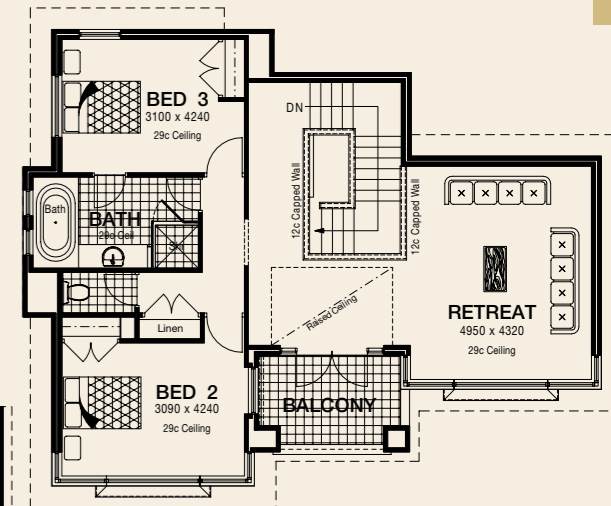
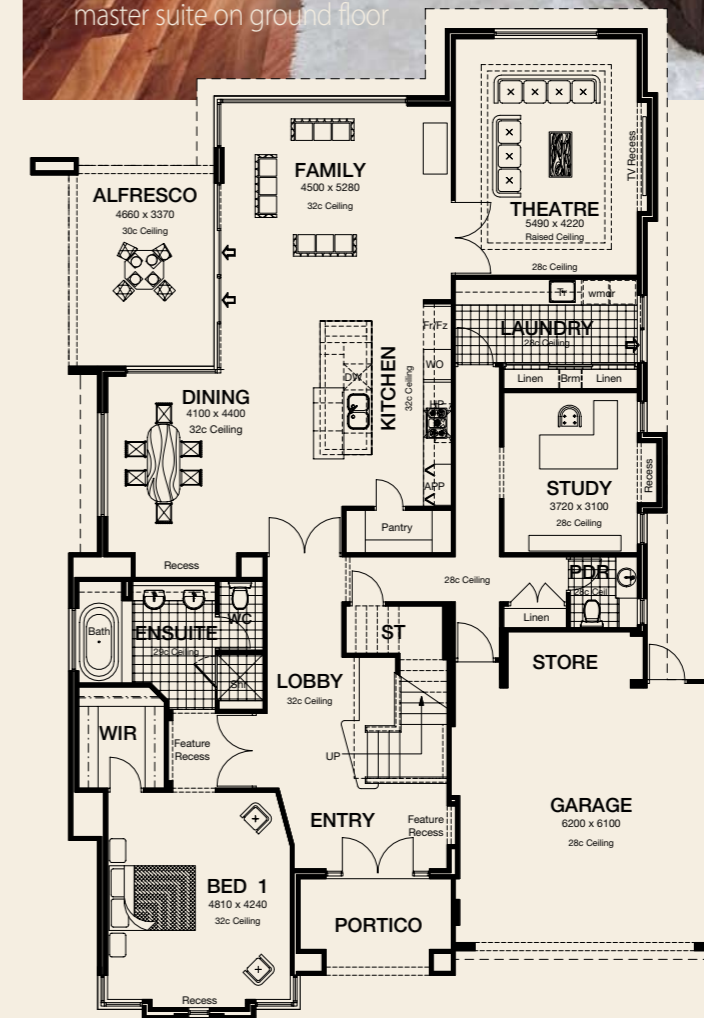


HOW IT MEASURES UP

| | |
|--------------------|----------------------------|
| Frontage | 15.95m |
| Depth | 23.39m |
| Ground Floor Total | 282.60m ² |
| Areas | |
| Floor | 216.12m ² |
| Garage | 42.79m ² |
| Portico | 7.91m ² |
| Alfresco | 15.78m ² |
| Upper Floor Total | 103.99m ² |
| Areas | |
| Floor | 87.64m ² |
| Stairwell | 8.60m ² |
| Balcony | 7.75m ² |
| GRAND TOTAL | 386.59m² |



alternate floor plans
master suite on ground floor



HOW IT MEASURES UP

| | |
|--------------------|----------------------------|
| Frontage | 15.95m |
| Depth | 22.99m |
| Ground Floor Total | 284.47m ² |
| Areas | |
| Floor | 217.99m ² |
| Garage | 42.79m ² |
| Portico | 7.91m ² |
| Alfresco | 15.78m ² |
| Upper Floor Total | 108.39m ² |
| Areas | |
| Floor | 92.04m ² |
| Stairwell | 8.60m ² |
| Balcony | 7.75m ² |
| GRAND TOTAL | 392.86m² |

alternate elevations



The Monterey is the entertainers absolute delight, with large open plan living that overlooks the outdoor alfresco and creates a seamless transition between the indoor and outdoor living space. With all its lifestyle values, The Monterey maintains all aspects of individual space and privacy.

Novus Homes has combined high quality materials, thoughtful design and skilled workmanship to create an exceptional home that has timeless appeal.

